



**B & S NELSON**  
BUILDING SERVICES

RENOVATION SPECIALISTS

*On Time As Promised!*



## BEACH STREET TUNCURRY CASE STUDY

[www.bsnelson.com.au](http://www.bsnelson.com.au)

# | REVIEW

”

I can count renovations Ruth and I have contracted Bob and Steve Nelson and team to carry out over last 15 years or so. Each one has been carried out beautifully and on time. Very professional. All trades turn up promptly when required and all materials are on site as needed. No waiting and no delays and no frustration. Clean and tidy work and clean up. No hesitation in using again. As the saying goes, “you get what you pay for”. Well done, team!

**Allan Butler**



**Positive:** *Professionalism, Punctuality, Quality, Responsiveness, Value*

”

B & S Nelson Building Services replaced an external Deck for us and I can say that Steve and his wonderful team were a dream team to deal with. On budget and on time and such a professional crew. Extremely happy with our finished job. Thank you !!

**Anne Van Dyck**



**Positive:** *Professionalism, Punctuality, Responsiveness*

# | BACKGROUND

The clients are repeat clients and friends that we have done multiple projects for over many years. This project was challenging in that it was in a small apartment block in tuncurry overlooking the beautiful Wallis Lake.

# | PROJECT DETAILS

The Bathroom and Laundry were separate rooms, we joined them into one. This is a common thing in homes these days. The laundry can take up a lot of room when really, it will fit into a nice little cupboard with no loss in usability or space. Check out the room in this Laundry that we've hidden behind the Bi fold doors.



# | SO WHAT DID WE DO?

- ✓ Removed the Laundry/Bathroom wall and opened up the two rooms.
- ✓ Deleted the bath and created a large walk in shower.
- ✓ Installed a beautiful “Timberline” wall hung Vanity. These are Australian made products from Armidale and a product we love to use.
- ✓ Milligans shower screens installed sleek glass shelves in the shower along with the glass shower panel. We were unable to build the recessed niche as the walls were masonry and a structural part of the building.
- ✓ Installed a new Skylight allowing the sun shine in and bringing the room to life.
- ✓ The Kitchen is huge now and we uncovered a window that was in the old Pantry.
- ✓ The posts could not be removed so we built around them and allowed them to become a feature.
- ✓ The Kitchen sink is a lovely under mount style taking up a minimal area.

**There was another major change that is increasingly common.  
We removed the bath.**

**The feature door into the room looks fantastic which was  
provided by [B & J Mcnamara](#).**

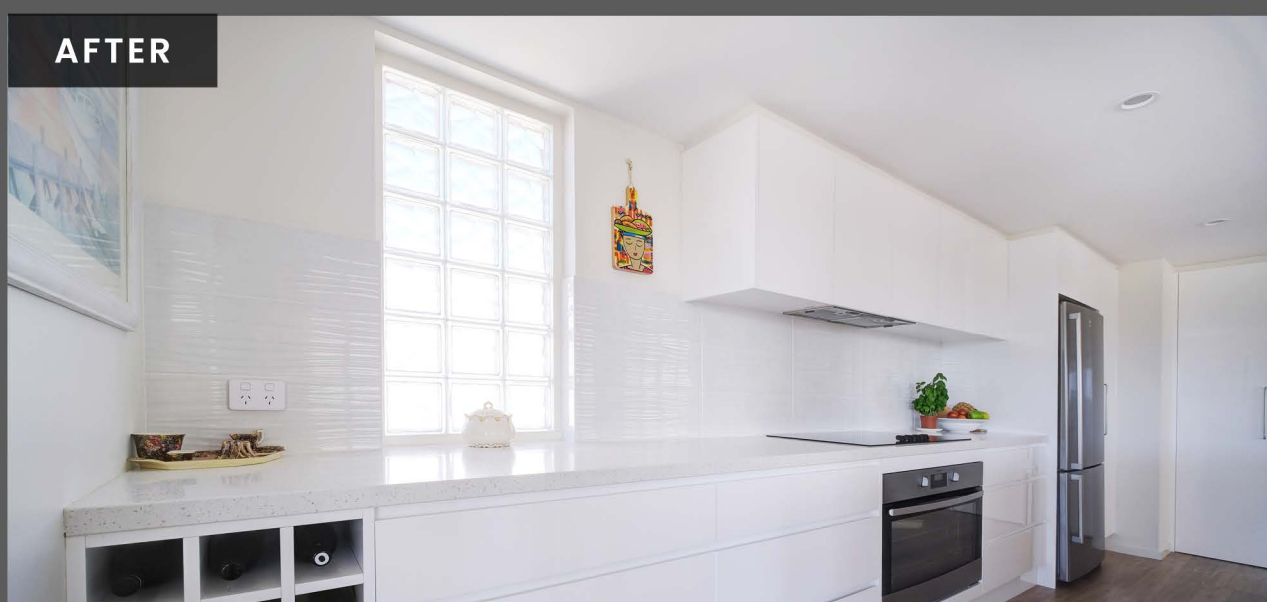
# KITCHEN RENOVATION/TRANSFORMATION

This old kitchen with the dark timber look also needed a change, and how good does it look now!



**BEFORE**

The pantry on the left is where the window was concealed.



**AFTER**

We designed the kitchen so that the glass bricks that were hidden in a pantry could be used to let the light into the new kitchen design. For some reason the original designers left this window in the pantry which Ruth and Al wanted



The large posts at either end of the kitchen bench had to stay as they were structural. Rob the designer has managed to make them look like a feature in this case.

The new kitchen has a great sitting area now at the kitchen bench where the old design did not.



The kitchen had stone tops that weigh hundreds of kilograms. In this case we had to use a small crane from Forster/ Taree Crane Hire to get the top up into the unit. We love these challenging jobs!



We had to install the under bench oven as room was a premium, meaning there wasn't a lot of room for the wall ovens that are so popular. This kitchen has the large 900 mm cooktop and oven.







# BATHROOM RENOVATION/TRANSFORMATION



The Laundry is concealed behind the Bifold doors on the left.

The frameless shower screen has been supplied by Milligans shower screens from Forster. They blend into the room so well and are simple to clean with no aluminium frames to clean around.



Milligans also supplied the small corner glass shelves in the shower for additional storage.







RENOVATION SPECIALISTS

*On Time As Promised!*



[www.bsnelson.com.au](http://www.bsnelson.com.au)

**(02) 6555 3484**

**TAVEDART PTY LTD**

**ABN 12 002 307 039 LIC NO. 275 455C**

Follow Us On

